

!! Diversion for motorhomes and caravans that are HIGHER than 2.8 metres and/or HEAVIER than 3500 kg !!!

There are currently height and weight restrictions for the **Pont de Fleurville**. This is the bridge (over the Saône) near the campsite. Vehicles **taller than 2.8 metres** and/or **heavier than 3500 kg** can therefore temporarily **NOT cross the bridge**. So measuring in advance is recommended (note air conditioning, parabola, antenna, etc.).

We have made a clear and safe diversions for you (+ 10 km / 15 minutes). It is minimally signposted so we recommend you have this description ready from the moment you leave the Autoroute A6.



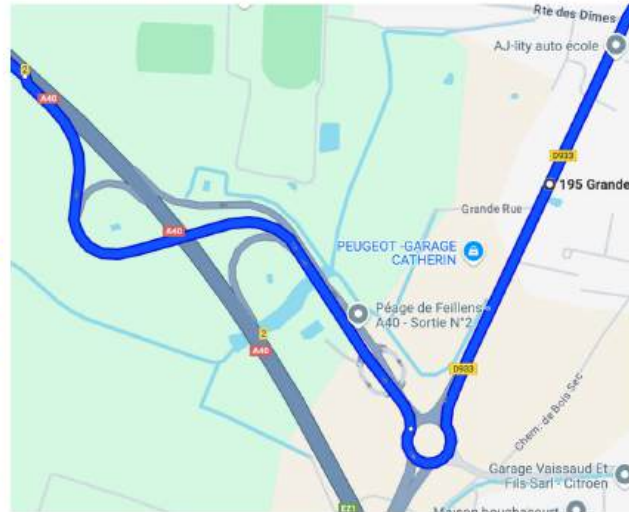
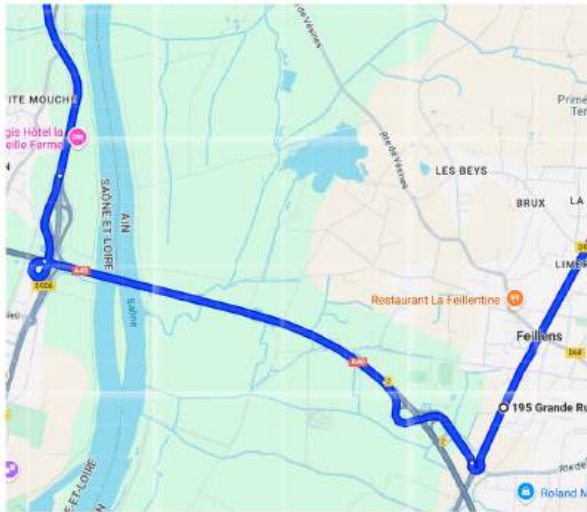
Diversions from Mâcon to the campsite (arriving from the south)



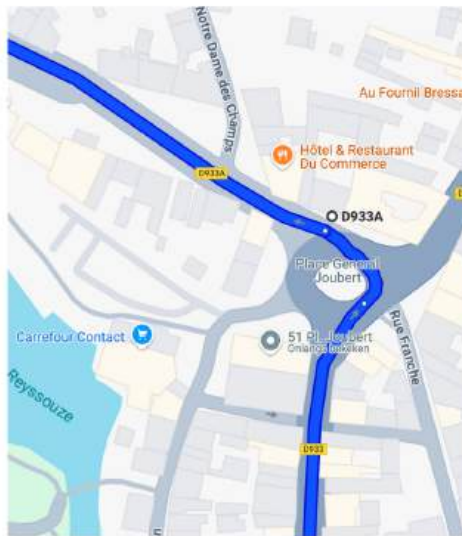
D906 for about 2km to the exit to the A40, direction Geneva / Bourg-en-Bresse / Replonges (2nd photo). Merge onto the A40.

Leave the Autoroute A6 at exit 28 towards Mâcon Nord. After the tollbooth, follow the D672 to the roundabout. At the roundabout, take the 3rd exit onto the N72. Follow the N72 until the exit to the D906 (1st photo). Merge onto the D906, towards the A40 / Mâcon / Bourg-en-Bresse. Follow the

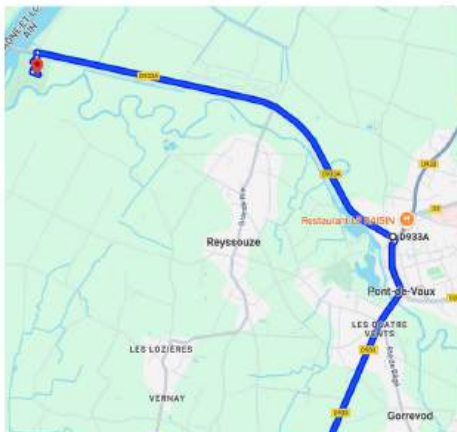
!!! CAUTION: the diversion therefore applies not only to heavier than 3500 kg but ALSO to higher than 2.8 metres !!!



Follow the A40 to exit 2 (small stretch of toll road), towards Pont-de-Vaux / Feillens / Replonges. Take this exit and leave the toll road. After the toll booth, you will come to a roundabout. Take the 3rd exit here to the D933, towards Pont-de-Vaux. Then follow the D933 to Pont-de-Vaux. You will pass through the villages of Feillens, Manziat and Ozan on this road.



Arriving in Pont-de-Vaux, follow the D933 to the roundabout. At the roundabout, take the 3rd exit onto the D933A, towards Tournus / Fleurville (see photo). **Note:** you can ignore the restriction signs here as you turn left before the bridge (with restrictions).



Follow the D933A for about 3.5 km. Just before the bridge, turn left to the campsite. **WELCOME !!!**